

Symptoms: Pain in right Achilles tendon

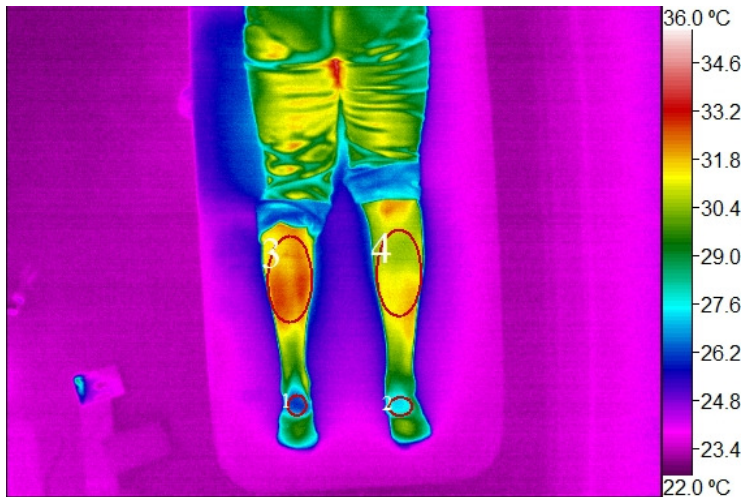
Points Used: Shihmien, BL-56, BL-61, Local Achilles Point

Background: Acupuncture science dictates that two bilateral points should display a reasonable degree of physiological symmetry. Thermographic Analysis is an excellent way to show physiology through skin surface analysis. Proper acclimation techniques were used, as well as a calibrated ICI 9640 medical thermal camera and software. A PACT Board Certified thermographers analyzed the results.

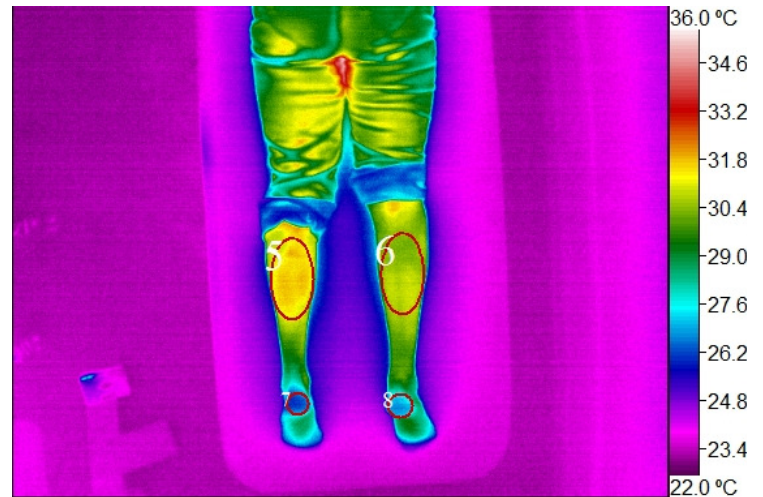
Methods and Calculations: Thermographic Analysis showed a heat imbalance in the calves and calcaneus. Pre-needling values showed an average delta T of 1.12 in the heel, and a 1.11 DT in the posterior leg. Images compare DT values before and after needling. Image 27 versus Image 34 show a significant drop in DT from 1.12 to .81 in the heel and 1.11 to .85 in the posterior leg.

Discussion: It is important when comparing values in testing to keep the same scale as shown to the right of each image. The Delta T measurement is important to show a relative change. A temperature decrease or increase independent of the opposite side comparison is of little to no value as a temperature change may happen secondary to a change in room climate. The comparison takes this in to account as both sides of the body would have cooled symmetrically.

Conclusion: The change in temperature seen is significant and shows a direct response of needling. A greater balance in the zones studied has been accomplished.



Extra 27 (Pre-needling)



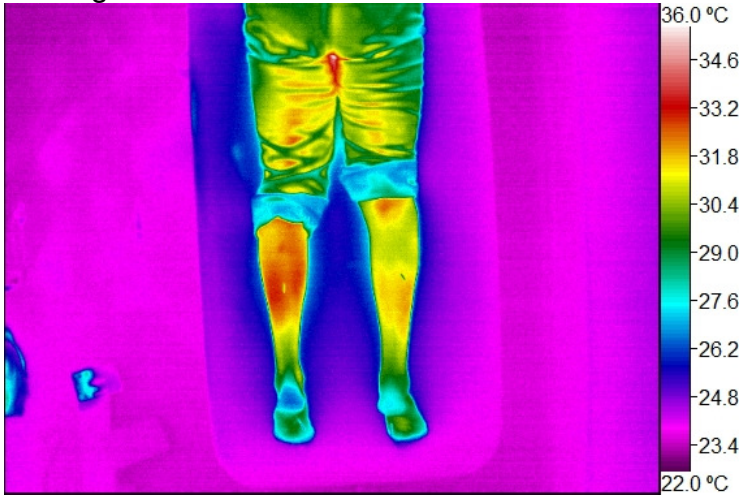
Extra 34 (Post Needling)

| Image | Zone | Min | Delta T (Min) | Max | Delta T (Max) | Avg | Delta T (Avg) |
|-------|------|-------|---------------|-------|---------------|-------|---------------|
| Left | 1 | 26.06 | -1.22 | 27.92 | -0.53 | 26.59 | -1.12 |
| Left | 2 | 27.28 | | 28.45 | | 27.71 | |
| Left | 3 | 25.87 | -1.48 | 33.37 | 0.96 | 32.37 | 1.11 |
| Left | 4 | 27.35 | | 32.41 | | 31.26 | |
| Right | 5 | 26.09 | -2.71 | 32.37 | 0.84 | 31.66 | 0.85 |
| Right | 6 | 28.80 | | 31.53 | | 30.81 | |
| Right | 7 | 26.02 | 0.37 | 27.29 | -1.36 | 26.52 | -0.81 |

Thermographic Wellness

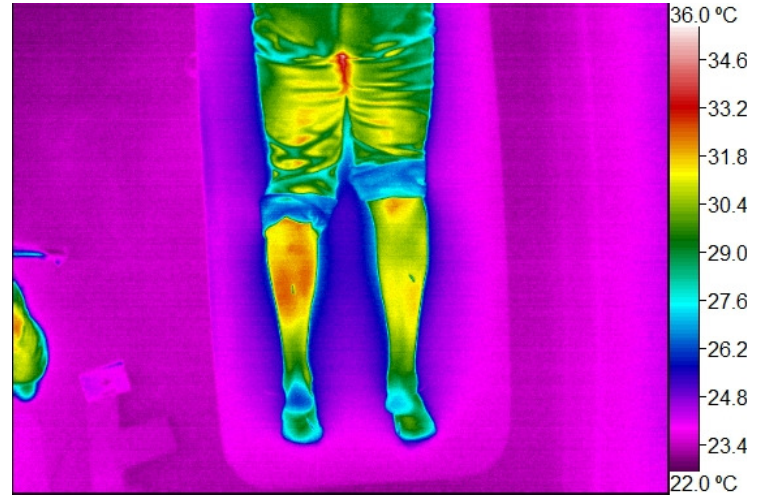
911 East Main St, Torrington, Connecticut 06790, United States

Right 8 25.65

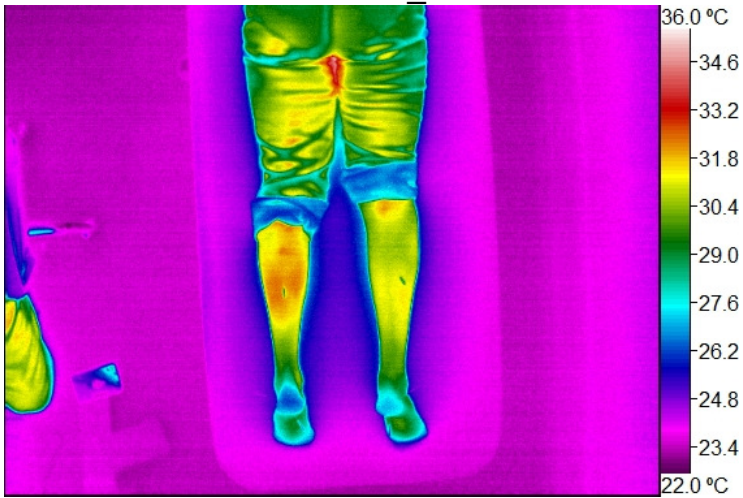


Extra_28

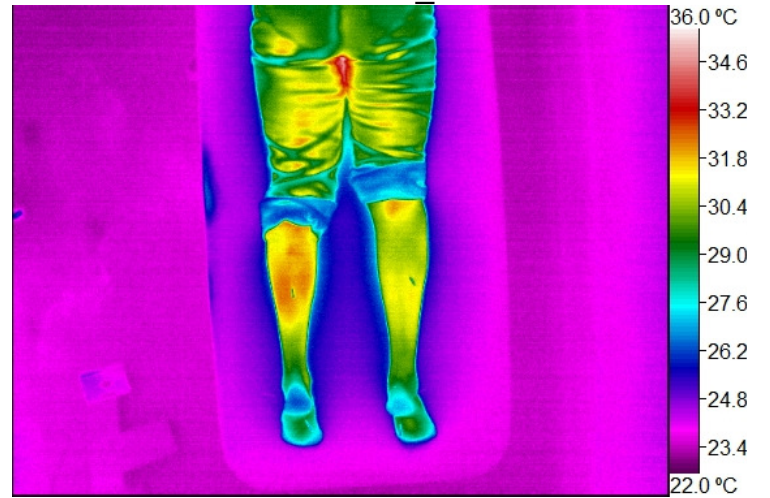
28.65 27.33



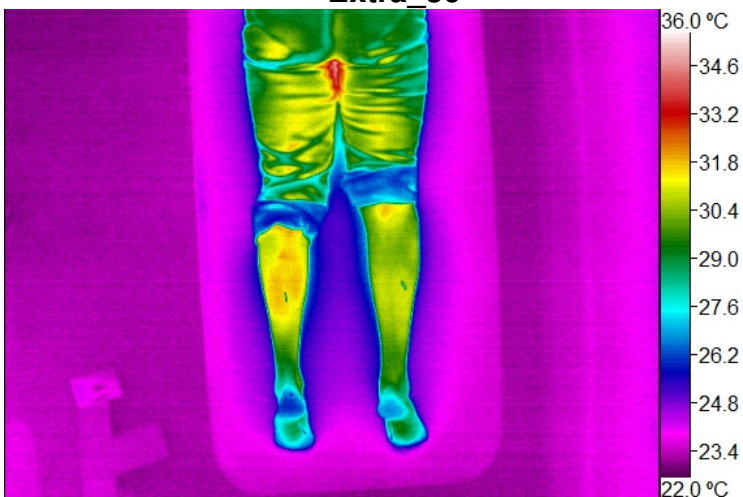
Extra_29



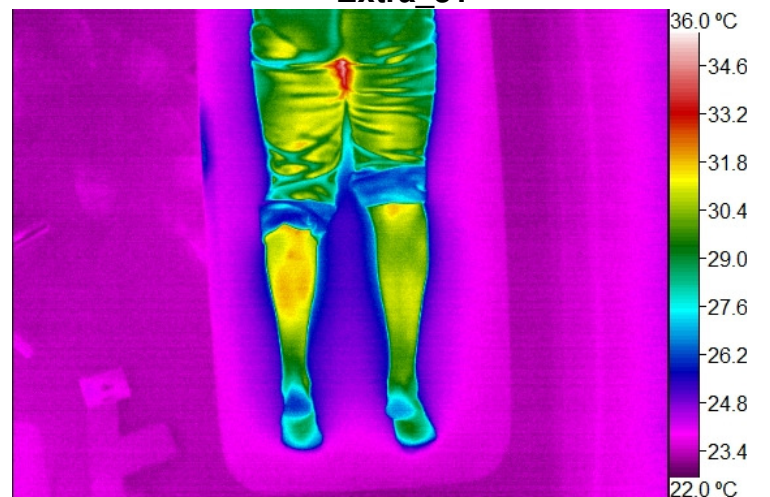
Extra_30



Extra_31



Extra_32



Extra_33